

Firelock® Temperature P

FIRE-RESISTANT ROLLING DOOR EI160 - EI90 - EI120

The primary aim of a fire-resistant rolling door is to protect people and property by preventing the spread of fire. Firelock Temperature P fire-resistant rolling doors are connected to the fire alarm system. When an alarm has sounded, the doors close and form a physical barrier. Firelock Radiation P rolling doors are built from horizontal galvanised steel slats.

These rolling doors can be used in public and industrial buildings, including shopping centres and factories.

STANDARD SPECIFICATIONS

Installation:	On the wall.
Mounting surface:	Concrete or steel fitted with fire-resistant cladding.
Applications:	Public and industrial buildings, including department stores, shopping centres, warehouses, factories and car parks.
Fire resistance:	Fire resistance class EI ₁₆₀ , EI ₁₂₀ , EI ₉₀ and EI ₆₀ , according to the EN 1634-1 standard.
Length of protection:	Up to 90 minutes of two-sided protection, according to EI criteria. Up to 120 minutes of one-sided protection, according to EI criteria.
Wind load:	Class 2, according to standard EN 13241-1.
Material:	Galvanised steel slats. These slats are securely hooked together and fixed at the side with steel end locks. This ensures that the rolling door descends uniformly.
Clear opening:	Maximum height 9000 mm Maximum width 8000 mm ! Please contact us for other dimensions
Side guides:	Galvanised steel profiles. Dimensions: 140 x 122 mm. Part of the side guides is filled with insulating material to ensure thermal insulation.
Weight:	42 kg/m ²
Bottom beam:	Robust U-profile.
Safety bar:	Standard installation according to standard EN 12604. Acoustic and visual signal.

FAIL SAFE

Firelock Temperature P fire-resistant rolling doors are equipped with an external Gravity Fail Safe (GFS) chain drive with a 400V self-closing drive system in the event of a power failure.

STANDARD MODEL

- Control box for operation and signals.
- Gravity Fail Safe (GFS) drive system.
- Safety bar, to ensure a controlled descent.
- 24V emergency power batteries ensure continuity of power supply to the magnetic brake in case of power failure.
- Connection to the fire alarm system.

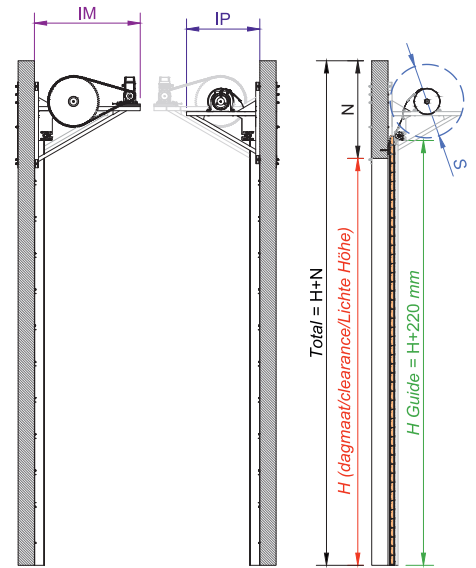
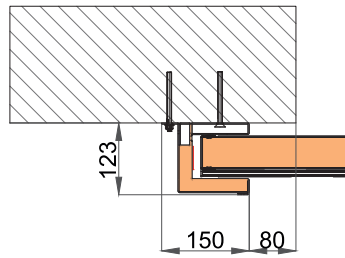
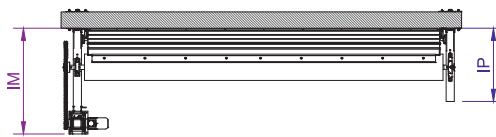
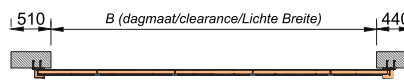
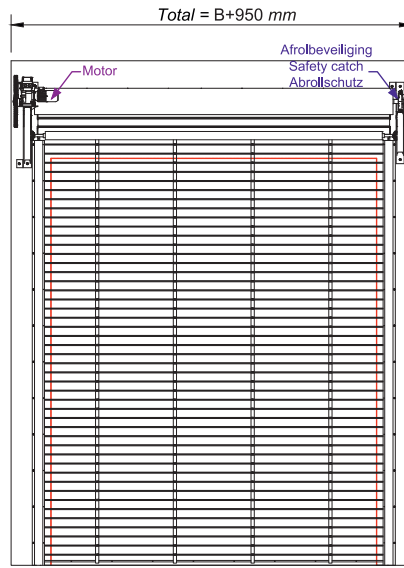
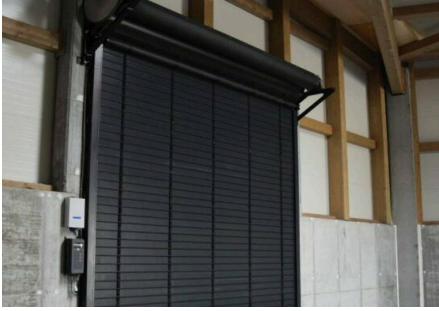
OPTIONS

- Automatic operation.
- Rolled door enclosed in housing.
- Drive system enclosed in housing.
- Photocell protection.
- Powder-coating of visible parts in specific (standard) RAL colours.

- ▲ EI classification (EN 1634-1)
- ▲ Up to 90 minutes fire-resistant on both sides, up to 120 minutes fire-resistant on one side
- ▲ Wind load class 2 according to standard EN 13241-1
- ▲ Suitable for a.o. public and industrial buildings
- ▲ Suitable for indoor/indoor and indoor/outdoor situations
- ▲ Validated cycle test in accordance with C2 (10.000 movements)
- ▲ CE marking



Firelock® Temperature P



H	N	S _e	IM	IP
2000 mm	1050 mm	650 mm	1050 mm	900 mm
2500 mm	1050 mm	700 mm	1150 mm	900 mm
3000 mm	1150 mm	750 mm	1150 mm	900 mm
3500 mm	1150 mm	800 mm	1300 mm	950 mm
4000 mm	1150 mm	800 mm	1300 mm	950 mm
4500 mm	1250 mm	850 mm	1400 mm	1000 mm
5000 mm	1250 mm	850 mm	1400 mm	1000 mm
5500 mm	1250 mm	900 mm	1500 mm	1050 mm
6000 mm	1250 mm	900 mm	1500 mm	1050 mm
6500 mm	1250 mm	900 mm	1500 mm	1050 mm
7000 mm	1350 mm	950 mm	1650 mm	1100 mm
7500 mm	1350 mm	950 mm	1650 mm	1100 mm
8000 mm	1350 mm	1000 mm	1650 mm	1150 mm

Hoefnagels Fire Safety
 Zevenheuvelenweg 50
 5048 AN Tilburg

Tel. +31 13 4625959
 info@hoefnagels.com
 www.hoefnagels.com

